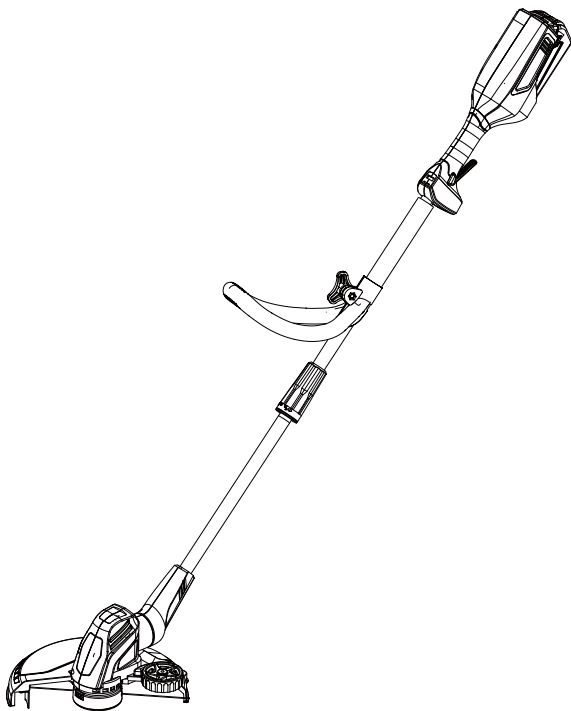


BADGER

40V Grass Trimmer

USER'S MANUAL



Important!

It is essential that you read the instructions in this manual before mounting and operating this machine.


c **ETL** us
Intertek
5001154

SAFETY GUIDELINES - DEFINITIONS

It is important to read and understand this manual. The information it contains relates to protecting YOUR SAFETY and PREVENTING PROBLEMS. The symbols below are used to help you recognize this information.

⚠ DANGER: Indicates an imminently hazardous situation which, if not avoided will result in death or serious injury.

⚠ WARNING: Indicates a potentially hazardous situation which, if not avoided, could result in death or serious injury.

⚠ CAUTION: Indicates a potentially hazardous situation which, if not avoided, may result in minor or moderate injury.

NOTICE: Used without the safety alert symbol indicates potentially hazardous situation which, if not avoided, may result in property damage.

DISCLAIMERS:

All information, illustrations and specifications in this manual are based on the latest information available at the time of publishing. The illustrations used in this manual are intended as representative reference views only. Moreover, because of our continuous product improvement policy, we may modify information, illustrations and/or specifications to explain and/or exemplify a product, service or maintenance improvement. We reserve the right to make any change at any time without notice. Some images may vary depending upon which model is shown.

ALL RIGHTS RESERVED:

No part of this publication may be reproduced or used in any form by any means – graphic, electronic or mechanical, including photocopying, recording, taping or information storage and retrieval systems – without the written permission of BADGER Outdoor Power Equipment.

⚠ DANGER: This manual contains important instructions for operating this product. For your safety and the safety of others, be sure to read this manual thoroughly before operating the battery/charger. Failure to properly follow all instructions and precautions can cause you and others to be seriously hurt or killed.

TRIMMER SPECIFICATIONS

Model	Part Number	Motor	No-load speed	Cutting Head	Cutting Path Diameter	Cutting Line Diameter	Works with Battery
WBP40VTR	LTB40	40V DC	7000 RPM	Auto-Feed	11/13" in	1.60 mm	LBA40120, LBA40125, LBA40240

⚠ WARNING










Some dust created by this product contains chemicals known to the State of California to cause cancer, birth defects or other reproductive harm. Some examples of these chemicals are:

- compounds in fertilizers
- compounds in insecticides, herbicides and pesticides
- arsenic and chromium from chemically treated lumber

To reduce your exposure to these chemicals, wear approved safety equipment such as dust masks that are specially designed to filter out microscopic particles.

SAFETY SYMBOLS

Some of the following symbols may be used on this product. Please study them and learn their meaning. Proper interpretation of these symbols will allow you to operate the product better and safer.

Symbols	Name	Designation/Explanation
V	Volts	Voltage
A	Amperes	Current
Hz	Hertz	Frequency (cycles per second)
W	Watts	Power
min	Minutes	Time
n_0	No Load Speed	Rational speed, at no load
	Alternating Current	Type of current
	Direct Current	Type or a characteristic of current
/min	Per Minute	Revolutions, strokes, surface speed, orbits etc., per minute
	Wet Conditions Alert	Do not expose to rain or use in damp locations
	Read the Operator's Manual	To reduce the risk of injury user must read and understand operator's manual before using this product.
	Eye Protection	Always wear eye protection with side shields marked to comply with ANSI Z87.1 when operating this equipment.
	Safety Alert	Precautions that involve your safety.
	No Blade	Do not install or use any type of blade on a product displaying this symbol.
	Keep Bystanders Away	Keep all bystanders at least 50 ft. away.
	Ricochet	Thrown objects can ricochet and result in personal injury or property damage.

SAFETY INFORMATION

IMPORTANT SAFETY WARNINGS & INSTRUCTIONS

⚠ WARNING: TO REDUCE RISK OF INJURY:

- Before any use, be sure everyone using this unit reads and understands all safety instructions and other information contained in this manual.
- Save these instructions and review frequently prior to use and in instructing others.
- Do not point unit discharge at self or bystanders.
- Keep long hair and loose clothing away from openings and moving parts.

⚠ WARNING: When using an electric tool, basic safety precautions should always be followed to reduce risk of fire, electric shock, and personal injury, including the following.

⚠ WARNING: When using trimmer be aware of your surroundings. Dust generated by your surrounding has the potential of containing harmful chemicals such as: compounds in fertilizers, compounds in insecticides, herbicides and pesticides, arsenic and chromium from chemically treated lumber. To reduce your exposure to these chemicals, wear approved safety equipment such as dust masks that are specially designed to filter out microscopic particles.

GENERAL SAFETY WARNINGS FOR TRIMMER BEFORE USING

- Use extra care when cleaning on stairs.
- Do not use on wet surfaces.
- Do not allow to be used as a toy. Close attention is necessary when used by or near children.
- Use only as described in this manual. Use only manufacturer's recommended attachments.
- Keep hair, loose clothing, fingers, and all body parts away from openings and moving parts.
- Don't expose to rain when operating the machine.
- Store indoors. Do not expose to rain or water. Avoid direct sunshine.

WHEN USING

⚠ DANGER: Keep hands away from trimmer string. Contact with moving trimmer string will result in serious personal injury.

- ALWAYS WEAR EYE PROTECTION – Wear safety glasses or goggles at all times when battery pack is installed.
- GUARD – Do not use this trimmer without guard attached.
- DRESS PROPERLY – Do not wear loose clothing or jewelry. They can be caught in moving parts. Rubber gloves and substantial rubber soled footwear are recommended when working outdoors. Don't operate the trimmer when barefoot or wearing open sandals. Wear heavy long pants to protect your legs. Wear protective hair covering to contain long hair.
- NYLON LINE – Keep all body parts, including face, hands and feet clear of rotating nylon line at all times.
- THE ROTATING LINE PERFORMS A CUTTING FUNCTION – Use care when trimming around screens and desirable plants.
- KEEP ALL BYSTANDERS AWAY – at a safe distance from work area, especially children.
- IMPORTANT WARNING – When being used as an Edger, stones, pieces of metal and other objects can be thrown out at high speed by the line. The trimmer and guard are designed to reduce the danger. However, the following special precautions should be taken:
 - MAKE SURE that other persons and pets are at least 100 feet (30m) away.

SAFETY INFORMATION

- TO REDUCE THE RISK of rebound (ricochet) injury, work going away from any nearby solid object such as wall, steps, large stone, tree, etc. Use great care when working close to solid objects and where necessary, do edging or trimming by hand.
- AVOID ACCIDENTALLY STARTING – Don't carry plugged-in trimmer with finger on trigger.
- DO NOT FORCE THE Appliance – at a rate faster than the rate at which it is able to cut effectively.
- USE THE RIGHT Appliance – Do not use this appliance for any job except that for which it is intended.
- DAMAGE TO UNIT – If you strike or become entangled with a foreign object, stop appliance immediately, remove battery, check for damage and have any damage repaired before further operation is attempted. Do not operate with a broken hub or spool.
- AVOID DANGEROUS ENVIRONMENTAL CONDITIONS – Do not use electric appliances in damp or wet locations. Follow all instructions in this Instruction Manual for proper operation of your trimmer. Don't use the trimmer in the rain.

GENERAL SAFETY WARNINGS AND INSTRUCTIONS FOR ALL TOOLS

- **A BATTERY OPERATED UNIT** with integral batteries or a separate battery pack must be recharged only with the specified charger for the battery. A charger that may be suitable for one type of battery may create a risk of fire when used with another battery.
- **AVOID** accidental starting. Be sure switch is in the off position before inserting battery pack. Carrying units with your finger on the switch or inserting the battery pack into a unit with the switch on invites accidents.
- **DO NOT** use unit if switch does not turn it on or off. A unit that cannot be controlled with the switch is dangerous and must be repaired.
- **DISCONNECT** battery pack from unit or place the switch in the locked or off position before making any adjustments, changing accessories, or storing the unit. Such preventative safety measures reduce the risk of starting the unit accidentally.
- **ALWAYS WEAR EYE PROTECTION** – Wear safety glasses or goggles at all times when this unit is in use. Also use face or dust mask.
- **STORE IDLE UNITS.** When not in use, the unit should be stored in a dry, high or locked-up place - out of reach of children.
- **DON'T OVERREACH.** Keep proper footing and balance at all times.
- **MAINTAIN UNIT WITH CARE.** Keep unit clean for best and safest performance. Follow instructions for proper maintenance.
- **DO NOT** attempt to repair the tool. To assure product safety and reliability, repairs, maintenance, and adjustments should be performed by BADGER service centers or authorized service centers, always using BADGER replacement parts.
- **DO NOT** operate tool in a gaseous or explosive atmosphere. Motors in these units normally spark, and the sparks might ignite fumes.
- **AVOID DANGEROUS ENVIRONMENTAL CONDITIONS** – Do not use electric units in damp or wet locations. Don't use the unit in the rain.
- **STAY ALERT** - Watch what you are doing. Use common sense. Do not operate unit when you are tired.
- **USE THE RIGHT UNIT** – Do not use this unit for any job except that for which it is intended.
- **DO NOT** allow to be used as a toy. Close attention is necessary when used by or near children. Not recommended for use by children.

SAFETY INFORMATION

- **DO NOT** attempt to clear clogs from unit without first removing battery.
- **USE ONLY** as described in this manual. Use only manufacturer's recommended attachments.
- **DO NOT** put any objects into openings. Do not use with any opening blocked; keep free of dust, lint, hair and everything that may reduce air flow.
- **KEEP** hair, loose clothing, fingers, and all parts of body away from openings and moving parts.
- **DO NOT** immerse any part of the unit in liquid.
- **DO NOT** handle charger, including charger plug, and charger terminals with wet hands.
- **KEEP CHILDREN, BYSTANDERS AND ANIMALS AWAY** from the work area a minimum of 30 feet (10 meters) when starting or operating the unit.
- **INSPECT THE AREA** before using the unit. Remove all debris and hard objects such as rocks, glass, wire, etc. that can ricochet, be thrown, or otherwise cause injury or damage during operation.
- **USE ONLY** charger supplied by the manufacturer to recharge.
- **EXERCISE CARE** in handling batteries in order not to short the battery with conducting materials such as rings, bracelets and keys. The battery or conductor may overheat and cause burns.
- **DO NOT OPEN OR MUTILATE** the batteries. Released electrolyte is corrosive and may cause damage to the eyes or skin. It may be toxic if swallowed.
- **DO NOT CHARGE** the unit outdoors.

⚠ WARNING: To reduce the risk of electrical shock; do not expose to rain, do not use on wet surfaces. Store indoors.

IMPORTANT SAFETY INSTRUCTIONS FOR BATTERY CHARGERS

⚠ WARNING: Shock hazard. Do not allow any liquid to get inside charger.

⚠ CAUTION: Burn hazard. To reduce the risk of injury, charge only designated BADGER batteries. Other types of batteries may burst causing personal injury and damage.

⚠ CAUTION: Under certain conditions, with the charger plugged in to the power supply, the charger can be shorted by foreign material. Foreign materials of a conductive nature such as, but not limited to, steel wool, aluminum foil, or any buildup of metallic particles should be kept away from charger cavities. Always unplug the charger from the power supply when there is no battery pack in the cavity. Unplug charger before attempting to clean.

- **DO NOT** attempt to charge the battery pack with any chargers other than the ones in this manual. The charger and battery pack are specifically designed to work together.
- These chargers are not intended for any uses other than charging designated BADGER rechargeable batteries. Any other uses may result in risk of fire, electric shock or electrocution.
- **DO NOT** expose charger to rain or snow.
- Pull by plug rather than cord when disconnecting charger. This will reduce risk of damage to electric plug and cord.
- Make sure that cord is located so that it will not be stepped on, tripped over, or otherwise subjected to damage or stress.
- **DO NOT** use an extension cord unless it is absolutely necessary. Use of improper extension cord could result in risk of fire, electric shock, or electrocution.
- **DO NOT** operate charger with damaged cord or plug — have them replaced immediately.
- **DO NOT** operate charger if it has received a sharp blow, been dropped, or otherwise damaged in any way. Take it to an authorized service center.

SAFETY INFORMATION

- **DO NOT** disassemble charger; take it to an authorized service center when service or repair is required. Incorrect reassembly may result in a risk of electric shock, electrocution or fire.
- Disconnect the charger from the outlet before attempting any cleaning. This will reduce the risk of electric shock. Removing the battery pack will not reduce this risk.
- **NEVER** attempt to connect 2 chargers together.
- The charger is designed to operate on standard household electrical power (120Volts). Do not attempt to use it on any other voltage.
- An extension cord should not be used unless absolutely necessary. Use of improper extension cord could result in a risk of fire and electric shock. If extension cord must be used, make sure:
 - a. That pins on plug of extension cord are the same number, size and shape as those of plug on charger.
 - b. That extension cord is properly wired and in good electrical condition; and
 - c. That wire size is large enough for AC ampere rating of charger as specified below:

Cord Length (Feet)	25'	50'	100'
Cord Size (AWG)	16	16	16

IMPORTANT SAFETY INSTRUCTION FOR BATTERY PACKS

⚠ WARNING: For safe operation, read this manual and manuals originally supplied with tool before using the charger. The battery pack is not fully charged out of the carton. Before using the battery pack and charger, read the safety instructions below. Then follow charging procedures outlined.

READ ALL INSTRUCTIONS

- **DO NOT** incinerate the battery pack even if it is severely damaged or is completely worn out. The battery pack can explode in a fire. Toxic fumes and materials are created when battery packs are burned.
 - **DO NOT** charge or use battery in explosive atmospheres, such as in the presence of flammable liquids, gases or dust. Inserting or removing the battery from the charger may ignite the dust or fumes.
 - If battery contents come into contact with the skin, immediately wash area with mild soap and water. If battery liquid gets into the eye, rinse water over the open eye for 15 minutes or until irritation ceases. If medical attention is needed, the battery electrolyte for Lithium-Ion batteries is composed of a mixture of liquid organic carbonates and lithium salts.
 - Contents of opened battery cells may cause respiratory irritation. Provide fresh air. If symptoms persist, seek medical attention.
- ⚠ WARNING:** Burn hazard. Battery liquid may be flammable if exposed to spark or flame.
- Charge the battery packs only in BADGER chargers.
 - **DO NOT** splash or immerse in water or other liquids. This may cause premature cell failure.
 - Do not store or use the tool and battery pack in locations where the temperature may reach or exceed 105°F (40°C) (such as outside sheds or metal buildings in summer).

⚠ WARNING: Never attempt to open the battery pack for any reason. If battery pack case is cracked or damaged, do not insert into charger. Do not crush, drop or damage battery pack. Do not use a battery pack or charger that has received a sharp blow, been dropped, run over or damaged in any way (i.e., pierced with a nail, hit with a hammer, stepped on). Damaged battery packs should be returned to service center for recycling.

SAFETY INFORMATION

⚠ WARNING: Fire hazard. Do not store or carry battery so that metal objects can contact exposed battery terminals. For example, do not place battery in aprons, pockets, tool boxes, product kit boxes, drawers, etc., with loose nails, screws, keys, etc. Transporting batteries can possibly cause fires if the battery terminals inadvertently come in contact with conductive materials such as keys, coins, hand tools and the like. The US Department of Transportation Hazardous Material Regulations (HMR) actually prohibit transporting batteries in commerce or on airplanes (i.e., packed in suitcases and carry on luggage) UNLESS they are properly protected from short circuits. So when transporting individual batteries, make sure that the battery terminals are protected and well insulated from materials that could contact them and cause a short circuit. **NOTE:** Lithium-Ion batteries should not be put in checked baggage.

STORAGE RECOMMENDATIONS

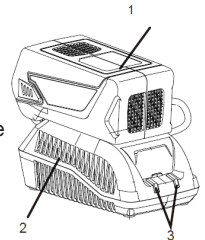
1. The best storage place is one that is cool and dry away from direct sunlight and excess heat or cold.
2. Long storage will not harm the battery pack or charger.

CHARGING PROCEDURE:

Battery packs are shipped in a low charge condition to prevent possible problems. Therefore, you should charge them before first use. If the charger does not charge your battery pack under normal circumstances, return both the battery pack and charger to your nearest repair center for electrical check. Charge time varies and is dependent upon the amp hour capacity of battery pack.

NOTICE: Do not place the charger in an area of extreme heat or cold. It will work best at normal room temperature. The battery pack will become slightly warm to the touch while charging. This is normal and does not indicate a problem.

1. Plug charger into household outlet, make sure the power supply is normal household voltage, 120 Volts, AC only, 60 Hz.
 2. Attach the battery pack to the charger by aligning the raised ribs on the battery pack with the grooves in the charger, then slide the battery pack onto the charger.
 3. Press down on the battery pack to be sure contacts on the battery pack engage properly with contacts in the charger. The green LED will flash as the battery charges.
 4. After charging is complete, the green LED will remain on.
- To remove the battery pack from the charger, slide back the battery pack.



IMPORTANT CHARGING NOTES

1. Longest life and best performance can be obtained if the battery pack is charged when the air temperature is between 65°F and 75°F (18°- 24°C). **DO NOT** charge the battery pack in an air temperature below +40°F (+4.5°C), or above +105°F (+40.5°C). This is important and will prevent serious damage to the battery pack.
2. The charger and battery pack may become warm to touch while charging. This is a normal condition, and does not indicate a problem. To facilitate the cooling of the battery pack after use, avoid placing the charger or battery pack in a warm environment such as in a metal shed, or an uninsulated trailer.

SAFETY INFORMATION

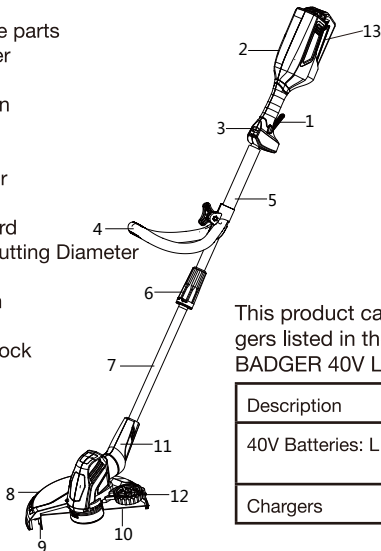
3. If the battery pack does not charge properly:
 - a. Check current at receptacle by plugging in a lamp or other appliance
 - b. Check to see if receptacle is connected to a light switch which turns power off when you turn out the lights.
 - c. Move charger and battery pack to a location where the surrounding air temperature is approximately 65°F - 75°F (18°- 24°C).
 - d. If charging problems persist, take the tool, battery pack and charger to your local service center.
4. The battery pack should be recharged when it fails to produce sufficient power on jobs which were easily done previously. **DO NOT CONTINUE** to use under these conditions. Follow the charging procedure. You may also charge a partially used pack whenever you desire with no adverse affect on the battery pack.
5. Foreign materials of a conductive nature such as, but not limited to, steel wool, aluminum foil, or any buildup of metallic particles should be kept away from charger cavities. Always unplug the charger from the power supply when there is no battery pack in the cavity. Unplug charger before attempting to clean.
6. Do not freeze or immerse the charger in water or any other liquid.

⚠ WARNING: Do not allow any liquid to get inside charger. Never attempt to open the battery pack for any reason. If the plastic housing of the battery pack breaks or cracks, return to a service center for recycling.

FEATURES

Description of the parts

1. On/Off Trigger
2. Rear Handle
3. Starter Button
4. Handle
5. Upper Shaft
6. Shaft Coupler
7. Lower Shaft
8. Trimmer Guard
9. Adjustable Cutting Diameter
10. Cutting Line
11. Edger Button
12. Edger wheel
13. Battery Interlock



This product can accept any of the batteries and chargers listed in the chart below:
BADGER 40V Lithium-Ion Packs and Chargers

Description	Part number
40V Batteries: LI-ION	LBA40120, LBA40125, LBA40240
Chargers	CGA402

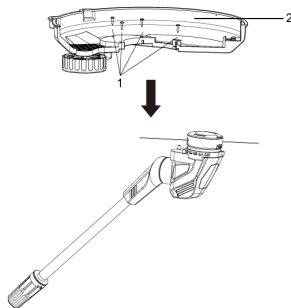
ASSEMBLY

INSTALLING THE TRIMMER GUARD

⚠ WARNING: Always remove the rechargeable battery from the device before all work.

Only use trimmer guard sent with tool. If you need to replace always make sure to use correct Westinghouse replacement part.

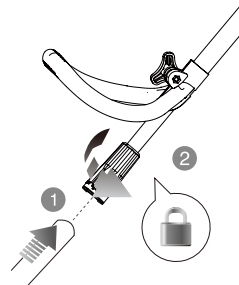
1. Feed the head of the trimmer and line through the top of the guard hole.
2. Then align the four pins (1) of the protective cover with the holes of the spool base drum one-to-one match. Use screws provided to fix them together.



SHAFT ASSEMBLY

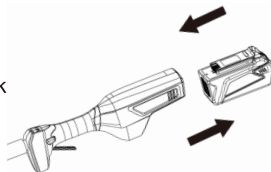
⚠ WARNING: Always remove the rechargeable battery from the device before all work.

Use the guides on the lower and upper shaft to align correctly, then insert the lower shaft into the shaft coupler on the upper shaft. Hand tighten the coupler to lock in place.



INSTALLING AND REMOVING THE RECHARGEABLE BATTERY

⚠ WARNING: Always switch the tool off before you insert or remove the rechargeable battery. If you want to remove the rechargeable battery from the tool, press the button on the end of the battery and pull the it from the tool. To insert the rechargeable battery in the tool, first line up the base of the rechargeable battery with the guide on the housing. Then push the rechargeable battery firmly into the tool until hear the locking click into place. If the rechargeable battery is not locked into place, you or other persons may be injured.

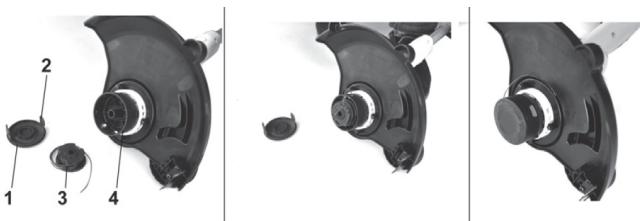


CHANGING THE TRIMMER SPOOL

⚠ WARNING: Always remove the rechargeable battery from the device before all work.

Press the spool head cap buttons (2) and pull down to remove spool head cap (1). Place new spool in place, make sure words on spool are facing toward you. Feed trimmer line on each side through holes in trimmer head (4). Replace spool head cap until it clicks in place.

⚠ CAUTION: To avoid trimmer damage, if the cutting line protrudes beyond the trimming blade, cut it off so that it just reaches the blade.



OPERATION

CHARGING PROCEDURE:

NOTICE: Do not place the charger in an area of extreme heat or cold. It will work best at normal room temperature. The battery pack will become slightly warm to the touch while charging. This is normal and does not indicate a problem.

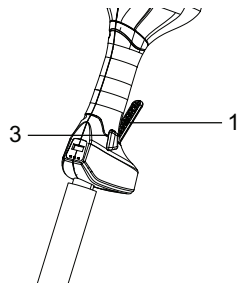
1. Plug charger into household outlet, make sure the power supply is normal household voltage, 120 Volts, AC only, 60 Hz.
2. Attach the battery pack to the charger by aligning the raised ribs on the battery pack with the grooves in the charger, then slide the battery pack onto the charger.
3. Press down on the battery pack to be sure contacts on the battery pack engage properly with contacts in the charger. The green LED will flash as the battery charges.
4. After charging is complete, the green LED will remain on.
5. To remove the battery pack from the charger, slide back the battery pack.
6. Charging takes approx. 1-3 hours depending on the battery size. The battery heats up during the charging process. This is normal and does not signal a fault. Do not let battery remain on charger for more than 5 hours.

Note: Occasionally, the permissible temperature range may be exceeded during the charging cycle. In this case, the electronic charging control interrupts the charging cycle to avoid any damage to the battery. The red control light will then glow continuously. If you should witness this, pull the battery from the charging station and let it cool down for about 30 minutes. Then, restart the charging cycle by sliding the battery back onto the charging station.

TRIMMER OPERATION

Adopt a safe stance. Hold the trimmer in both hands. Do not set the cutting device down on the ground. Press the trigger lock on side of handle (3) and hold down on/off trigger (1). After switching on, let go of the starter switch. In order to switch off, release the trigger (1).

With the unit on, angle unit and slowly swing the trimmer side. Maintain a cutting angle of 5° to 10°. Do not exceed 10°. Cut with the tip of the line. To keep distance from hard surfaces use edge guide. Maintain a minimum distance of 24 inches (609.6 mm) between the guard and your feet. To achieve this distance adjust the overall height of the trimmer.



FEEDING TRIMMER LINE

Your trimmer uses .065 inch (1.65 mm) diameter, ROUND nylon line. During use, the tips of the nylon lines will become frayed and worn and the special self feeding spool will automatically feed and trim a fresh length of line. **Do not bump on ground in attempt to feed line or for any other purposes.** Cutting line will wear faster and require more feeding if the cutting or edging is done along sidewalks or other abrasive surfaces or heavier weeds are being cut.

OPERATION

CONVERTING TO EDGER

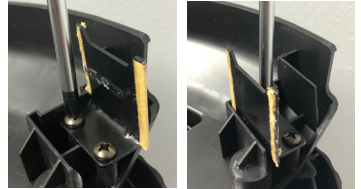
⚠ WARNING: When being used as an edger, stones, pieces of metal and other objects can be thrown out at high speed by the line. The trimmer and guard are designed to reduce the danger. However, **MAKE SURE** that other persons and pets are at least 100 feet (30m) away

Click the rotator button (11) on the trimmer head and rotate perpendicular to the shaft, until click.

CONVERTING TRIMMER DIAMETER FROM 13"-11"

To increase torque for thick grass you can change the trimmer path diameter from 13" to 11". Follow steps below:

1. Use a Phillips screwdriver to remove 2 screws on trimmer line cutter located under guard.
2. Rotate trimmer line cutter and tighten screws.



CARE AND MAINTENANCE

- ⚠ WARNING:** Always remove the rechargeable battery from the device before all work.
- Always clean and oil the blades after prolonged use of the hedge trimmer. This will greatly affect the life of the equipment. Damaged cutting units must be properly repaired immediately.
 - Clean the shearing blades with a dry cloth or - in case of heavier dirt -with a brush.
 - **NOTICE:** Oiling of the blades should ideally be carried out using an environmentally friendly lubricant.

STORAGE AND CLEANING

Fertilizers and other garden chemicals contain agents which greatly accelerate the corrosion of metals. Do not store the unit on or adjacent to fertilizers or chemicals. With the battery removed, use only mild soap and a damp cloth to clean the unit. Never let any liquid get inside the unit; never immerse any part of the unit into a liquid. Prevent the blades from rusting by applying a film of light machine oil after cleaning.

REPLACING TRIMMER LINE

Before you begin trimming, only use the appropriate type of cutting line. Use 1.6 mm nylon BADGER replacement spool and replacement cap. Reload nylon line (either bulk or prewound replacement spool) as shown in this manual. USE ONLY .065 inch (1.65 mm) DIAMETER ROUND NYLON MONOFILAMENT LINE. Do not use serrated or heavier gauge line, as they will overload the motor and cause overheating, and will not feed properly.

⚠ WARNING: The use of any accessory not recommended by BADGER for use with this trimmer could be hazardous.

CARE AND MAINTENANCE

REWINDING SPOOL FROM BULK LINE

It is not recommended to hand rewind spool from bulk line as this leads to issues with the trimmer if it is not spooled correctly. You can purchase pre-wound spools for this model from BADGER dealers.

MAINTENANCE

- To assure product SAFETY and RELIABILITY, repairs, maintenance and adjustment should be performed by authorized service centers or other qualified service organizations, always using identical replacement parts.
- Keep the air intake slots clean to avoid overheating.
- Your trimmer line can dry out over time. To keep your line in top condition, store spare pre-wound spools or bulk line in a plastic, sealable bag with a tablespoon of water.
- Plastic parts may be cleaned by using a mild soap and a damp rag.
- The line cutter on the edge of the guard can dull over time. It is recommended you periodically touch-up the sharpness of the blade with a file.

AUTOMATIC LINE FEED DOES NOT WORK

- Remove battery from tool.
- Remove the spool cap.
- Pull the cutting line until it protrudes approximately 5-3/8 inches (136mm) from the spool. If insufficient cutting line is left on the spool, install a new spool of cutting line.
- Ensure that the line is not crisscrossed on the spool. If it is, unwind the cutting line, then wind it back on the spool neatly so that the lines do not cross.
- Ensure the beginning of the cutting line is pulled tight against the spool.
- Align the tabs on the spool cap with the cut outs in the housing.
- Push the spool cap onto the housing until it snaps securely into place.
- If the cutting line protrudes beyond the trimming blade, cut it off so that it just reaches the blade.
- If the automatic line feed still does not work or the spool is jammed, try the following suggestions:
 - Carefully clean the spool and housing.
 - Remove the spool and check if the lever in the spool housing can move freely.
 - Remove the spool and unwind the cutting line, then wind it on neatly again. Replace the spool into the housing

BATTERY PACK REMOVAL AND PREPARATION FOR RECYCLING

To preserve natural resources, please recycle or dispose of batteries properly. This product contains lithium-ion batteries. Local, state or federal laws may prohibit disposal of lithium-ion batteries in ordinary trash. Consult your local waste authority for information regarding available recycling and/or disposal options.

⚠ WARNING: Upon removal, cover the battery pack's terminals with heavy-duty adhesive tape. Do not attempt to destroy or disassemble battery pack or remove any of its components. Lithium-ion batteries must be recycled or disposed of properly. Also, never touch both terminals with metal objects and/or body parts as short circuit may result. Keep away from children. Failure to comply with these warnings could result in fire and/or serious injury.



TROUBLESHOOTING

PROBLEM	POSSIBLE CAUSE	POSSIBLE SOLUTION
Trimmer runs slowly	Check that the spool housing can rotate freely	Carefully clean it if necessary
	Check that the cutting line does not protrude more than approximately 5-3/8 inches (136mm) from the spool.	If it does, cut it off so that it just reaches the line trimming blade.
Unit will not start	Battery not installed properly	Check battery installation
	Battery not charged	Check battery charging requirements
Battery will not charge	Battery not inserted into charger	Insert battery into charger until red LED appears
	Charger not plugged in	Plug charger into a working outlet. Check current at receptacle by plugging in a lamp or other appliance. Check to see if receptacle is connected to a light switch which turns power off when you turn out the lights.
	Surrounding air temperature too hot or too cold	Move charger and tool to a surrounding air temperature of above 40 degree F (4.5°C) or below 105 degree F (+40.5°C).